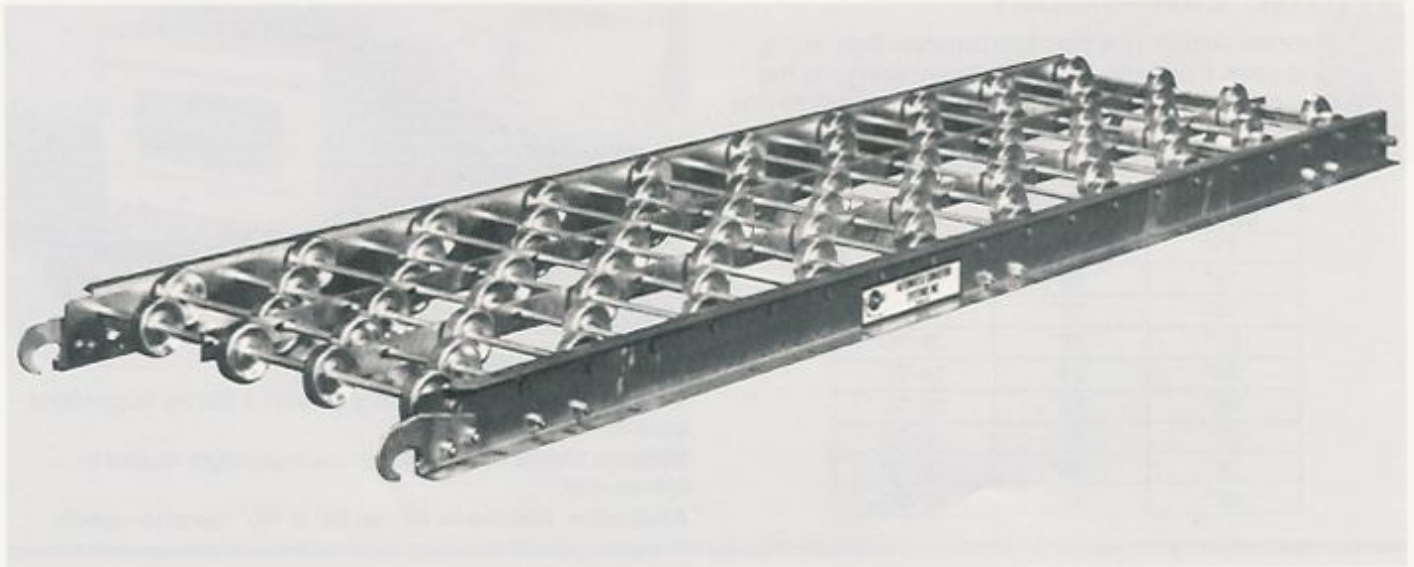
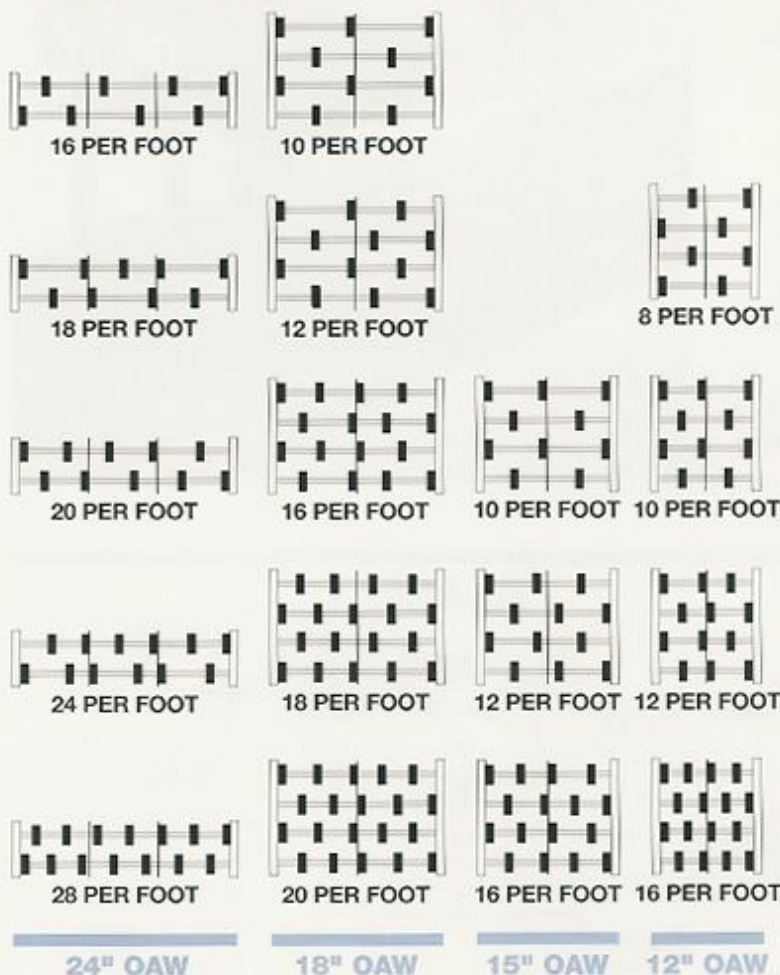


Gravity Skatewheel Conveyor



Typical Wheel Patterns



STANDARD SPECIFICATIONS

Frame - Frames are 2½" X 1" x 12 gauge galvanized steel or 2½" x 1" x ½" aluminum formed channels. The 12", 15" and 18" wide sections have one ½" x 1" axle supports and the 24" wide has two ½" x 1" axle supports.

Wheels - Zinc plated steel or aluminum wheels are 1½" diameter x ⅝" face with a steel hardened raceway and a ⅜" wide cone. Each wheel contains (7) ¼" hardened and ground steel balls. The lightly oiled baffled construction is designed to keep dirt out.

Cross Braces - 5 ft. long sections have (2) bolted cross members and 10 ft. long sections have (3) bolted cross members.

Axles - All axles are ¼" diameter cold drawn steel, set on 3" centers and secured with a ¼" - 20 stop nut.

Wheel Capacity - Steel, 50 lbs; aluminum, 45 lbs.

Wheels Per Foot - Standard patterns include 8, 10, 12, 16, 18, 20, 24 and 28 wheels per foot.

Couplings - Each 5' and 10' section is equipped with a hook and rod connector. The slotted hook permits minor lateral movement. No tools are necessary for assembly, just hook together.

Widths - Standard widths are 12", 15", 18" and 24".

Lengths - Standard lengths are 5' and 10'.

Curves - Standard curves are 45° and 90°. The outside radius is 4 feet. Capacity same as straight sections.

Conveyor Capacity - See Capacity Chart.

Gravity Skatewheel Conveyor

GALVANIZED STEEL STRAIGHT SECTIONS

| Model | Wheels Per Foot | Weight | |
|----------|-----------------|--------|----|
| | | 10' | 5' |
| 12G8-25 | 8 | 65 | 35 |
| 12G10-25 | 10 | 68 | 37 |
| 12G12-25 | 12 | 72 | 38 |
| 12G16-25 | 16 | 80 | 43 |

| Model | Wheels Per Foot | Weight | |
|----------|-----------------|--------|----|
| | | 10' | 5' |
| - | - | - | - |
| 15G10-25 | 10 | 73 | 40 |
| 15G12-25 | 12 | 78 | 43 |
| 15G16-25 | 16 | 87 | 48 |

| Model | Wheels Per Foot | Weight | |
|----------|-----------------|--------|----|
| | | 10' | 5' |
| 18G10-25 | 10 | 72 | 38 |
| 18G12-25 | 12 | 77 | 41 |
| 18G16-25 | 16 | 87 | 46 |
| 18G18-25 | 18 | 92 | 49 |
| 18G20-25 | 20 | 98 | 53 |

| Model | Wheels Per Foot | Weight | |
|----------|-----------------|--------|----|
| | | 10' | 5' |
| 24G16-25 | 16 | 95 | 52 |
| 24G18-25 | 18 | 100 | 55 |
| 24G20-25 | 20 | 103 | 57 |
| 24G24-25 | 24 | 112 | 62 |
| 24G28-25 | 28 | 118 | 65 |

GALVANIZED STEEL CURVE SECTIONS

| Model | Wheels Per Foot | Weight | |
|----------|-----------------|--------|-----|
| | | 90° | 45° |
| 12G90-25 | 12 | 72 | - |
| 12G45-25 | 12 | - | 35 |

| Model | Wheels Per Foot | Weight | |
|----------|-----------------|--------|-----|
| | | 90° | 45° |
| 15G90-25 | 12 | 77 | - |
| 15G45-25 | 12 | - | 40 |

| Model | Wheels Per Foot | Weight | |
|----------|-----------------|--------|-----|
| | | 90° | 45° |
| 18G90-25 | 18 | 82 | - |
| 18G45-25 | 18 | - | 46 |

| Model | Wheels Per Foot | Weight | |
|----------|-----------------|--------|-----|
| | | 90° | 45° |
| 24G90-25 | 24 | 112 | - |
| 24G45-25 | 24 | - | 60 |

ALUMINUM STRAIGHT SECTIONS

| Model | Wheels Per Foot | Weight | |
|----------|-----------------|--------|----|
| | | 10' | 5' |
| 12A8-25 | 8 | 35 | 19 |
| 12A10-25 | 10 | 36 | 20 |
| 12A12-25 | 12 | 39 | 21 |
| 12A16-25 | 16 | 43 | 23 |

| Model | Wheels Per Foot | Weight | |
|----------|-----------------|--------|----|
| | | 10' | 5' |
| - | - | - | - |
| 15A10-25 | 10 | 39 | 22 |
| 15A12-25 | 12 | 42 | 23 |
| 15A16-25 | 16 | 44 | 26 |

| Model | Wheels Per Foot | Weight | |
|----------|-----------------|--------|----|
| | | 10' | 5' |
| 18A10-25 | 10 | 40 | 20 |
| 18A12-25 | 12 | 41 | 22 |
| 18A16-25 | 16 | 46 | 25 |
| 18A18-25 | 18 | 49 | 27 |
| 18A20-25 | 20 | 52 | 28 |

| Model | Wheels Per Foot | Weight | |
|----------|-----------------|--------|----|
| | | 10' | 5' |
| 24A16-25 | 16 | 51 | 28 |
| 24A18-25 | 18 | 53 | 29 |
| 24A20-25 | 20 | 55 | 30 |
| 24A24-25 | 24 | 59 | 32 |
| 24A28-25 | 28 | 63 | 34 |

ALUMINUM CURVE SECTIONS

| Model | Wheels Per Foot | Weight | |
|----------|-----------------|--------|-----|
| | | 90° | 45° |
| 12A90-25 | 12 | 45 | - |
| 12A45-25 | 12 | - | 23 |

| Model | Wheels Per Foot | Weight | |
|----------|-----------------|--------|-----|
| | | 90° | 45° |
| 15A90-25 | 12 | 48 | - |
| 15A45-25 | 12 | - | 25 |

| Model | Wheels Per Foot | Weight | |
|----------|-----------------|--------|-----|
| | | 90° | 45° |
| 18A90-25 | 18 | 51 | - |
| 18A45-25 | 18 | - | 27 |

| Model | Wheels Per Foot | Weight | |
|----------|-----------------|--------|-----|
| | | 90° | 45° |
| 24A90-25 | 24 | 65 | - |
| 24A45-25 | 24 | - | 34 |

Frame Capacity Chart

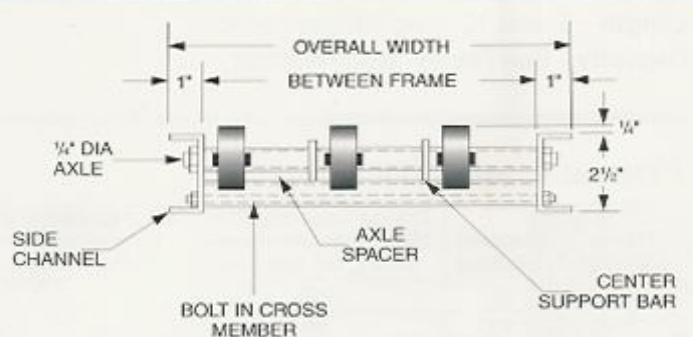
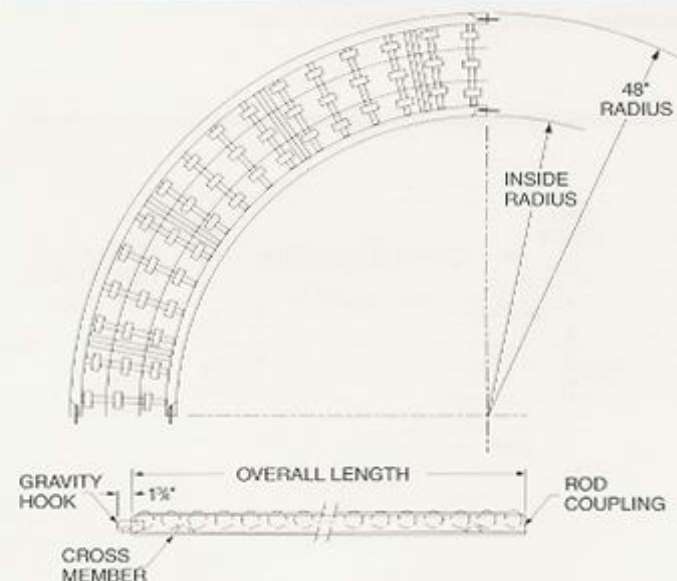
| Frame Material | Support Centers | Distributed Live Load Per Foot | Maximum Load Per Wheel |
|------------------|-----------------|--------------------------------|------------------------|
| Galvanized Steel | 10' | 38 lbs. | 50 lbs. |
| | 5' | 270 lbs. | |

NOTE: All capacities are based on distributed loads with a maximum deflection of 1/8" over 10'. Section capacities are subject to the total capacity of all wheels in a section but should not exceed above listed frame capacities.

Frame Capacity Chart

| Frame Material | Support Centers | Distributed Live Load Per Foot | Maximum Load Per Wheel |
|----------------|-----------------|--------------------------------|------------------------|
| Aluminum | 10' | 18 lbs. | 45 lbs. |
| | 5' | 150 lbs. | |

NOTE: All capacities are based on distributed loads with a maximum deflection of 1/4" over 10'. Section capacities are subject to the total capacity of all wheels in a section but should not exceed above listed frame capacities.



| INSIDE RADIUS | | OUTSIDE RADIUS | |
|---------------|---------------|----------------|----------------|
| Overall Width | Inside Radius | Overall Width | Outside Radius |
| 12" | 36" | 12" | 48" |
| 15" | 33" | 15" | 48" |
| 18" | 30" | 18" | 48" |
| 24" | 24" | 24" | 48" |

Gravity Skatewheel Conveyor

STRAIGHT SECTIONS – 3" Axle Centers

2 1/2" x 1" x 12 Ga. Painted Frame – Galvanized Steel Wheels

| 12" WIDTH O.A. | | | | 15" WIDTH O.A. | | | |
|----------------|-----------------|-------------------|-------|----------------|-----------------|-------------------|-------|
| Model No. | Wheels Per Foot | Price Per Section | | Model No. | Wheels Per Foot | Price Per Section | |
| | | 10'-0" | 5'-0" | | | 10'-0" | 5'-0" |
| 12G-8-25 | 8 | \$151 | \$81 | 15G-10-25 | 10 | \$171 | \$94 |
| 12G-10-25 | 10 | 166 | 86 | 15G-12-25 | 12 | 189 | 101 |
| 12G-12-25 | 12 | 181 | 96 | 15G-16-25 | 16 | 221 | 116 |
| 12G-16-25 | 16 | 211 | 111 | | | | |
| 18" WIDTH O.A. | | | | 24" WIDTH O.A. | | | |
| Model No. | Wheels Per Foot | Price Per Section | | Model No. | Wheels Per Foot | Price Per Section | |
| | | 10'-0" | 5'-0" | | | 10'-0" | 5'-0" |
| 18G-10-25 | 10 | \$195 | \$98 | 24G-16-25 | 16 | \$246 | \$130 |
| 18G-12-25 | 12 | 200 | 104 | 24G-18-25 | 18 | 261 | 138 |
| 18G-16-25 | 16 | 226 | 119 | 24G-20-25 | 20 | 276 | 145 |
| 18G-18-25 | 18 | 240 | 126 | 24G-24-25 | 24 | 306 | 160 |
| 18G-20-25 | 20 | 256 | 134 | 24G-28-25 | 28 | 336 | 175 |

2 1/2" x 1" x 1/8" Aluminum Frame – Aluminum Wheels

| 12" WIDTH O.A. | | | | 15" WIDTH O.A. | | | |
|----------------|-----------------|-------------------|-------|----------------|-----------------|-------------------|-------|
| Model No. | Wheels Per Foot | Price Per Section | | Model No. | Wheels Per Foot | Price Per Section | |
| | | 10'-0" | 5'-0" | | | 10'-0" | 5'-0" |
| 12A-8-25 | 8 | \$171 | \$91 | 15A-10-25 | 10 | \$197 | \$104 |
| 12A-10-25 | 10 | 189 | 100 | 15A-12-25 | 12 | 214 | 113 |
| 12A-12-25 | 12 | 206 | 108 | 15A-16-25 | 16 | 250 | 131 |
| 12A-16-25 | 16 | 240 | 126 | | | | |
| 18" WIDTH O.A. | | | | 24" WIDTH O.A. | | | |
| Model No. | Wheels Per Foot | Price Per Section | | Model No. | Wheels Per Foot | Price Per Section | |
| | | 10'-0" | 5'-0" | | | 10'-0" | 5'-0" |
| 18A-10-25 | 10 | \$221 | \$117 | 24A-16-25 | 16 | \$278 | \$146 |
| 18A-12-25 | 12 | 227 | 120 | 24A-18-25 | 18 | 295 | 155 |
| 18A-16-25 | 16 | 265 | 134 | 24A-20-25 | 20 | 313 | 163 |
| 18A-18-25 | 18 | 272 | 142 | 24A-24-25 | 24 | 348 | 181 |
| 18A-20-25 | 20 | 291 | 152 | 24A-28-25 | 28 | 383 | 198 |

CURVE SECTIONS

2 1/2" x 1" x 12 Ga. Painted Frame – Galvanized Steel Wheels

| 12" WIDTH O.A. | | | | 15" WIDTH O.A. | | | |
|----------------|-------------|---------------------|----------|----------------|-------------|---------------------|----------|
| Model No. | Degree Turn | Price Per Section | | Model No. | Degree Turn | Price Per Section | |
| | | *With Outside Guard | No Guard | | | *With Outside Guard | No Guard |
| 12G90-25 | 90° | \$167 | \$149 | 15G90-25 | 90° | \$175 | \$157 |
| 12G45-25 | 45° | 103 | 89 | 15G45-25 | 45° | 108 | 89 |
| 18" WIDTH O.A. | | | | 24" WIDTH O.A. | | | |
| Model No. | Degree Turn | Price Per Section | | Model No. | Degree Turn | Price Per Section | |
| | | *With Outside Guard | No Guard | | | *With Outside Guard | No Guard |
| 18G90-25 | 90° | \$202 | \$183 | 24G90-25 | 90° | \$304 | \$285 |
| 18G45-25 | 45° | 123 | 107 | 24G45-25 | 45° | 197 | 180 |

2 1/2" x 1" x 1/8" Aluminum Frame – Aluminum Wheels

| 12" WIDTH O.A. | | | | 15" WIDTH O.A. | | | |
|----------------|-------------|---------------------|----------|----------------|-------------|---------------------|----------|
| Model No. | Degree Turn | Price Per Section | | Model No. | Degree Turn | Price Per Section | |
| | | *With Outside Guard | No Guard | | | *With Outside Guard | No Guard |
| 12A90-25 | 90° | \$206 | \$167 | 15A90-25 | 90° | \$220 | \$175 |
| 12A45-25 | 45° | 130 | 103 | 15A45-25 | 45° | 159 | 108 |
| 18" WIDTH O.A. | | | | 24" WIDTH O.A. | | | |
| Model No. | Degree Turn | Price Per Section | | Model No. | Degree Turn | Price Per Section | |
| | | *With Outside Guard | No Guard | | | *With Outside Guard | No Guard |
| 18A90-25 | 90° | \$221 | \$188 | 24A90-25 | 90° | \$319 | \$298 |
| 18A45-25 | 45° | 198 | 123 | 24A45-25 | 45° | 219 | 187 |

NOTE: For odd lengths see "Special Pricing Instructions." ★ GUARD IS ADJUSTABLE CHANNEL TYPE.

SPECIAL PRICING INSTRUCTIONS

A. STEEL FRAMES / ALUMINUM WHEELS

Add \$.35 per wheel to the price of the appropriate section of steel wheel conveyor.

B. ALUMINUM FRAMES / STEEL WHEELS

Deduct \$.15 per wheel from the price of the appropriate section of aluminum wheel conveyor.

C. STEEL FRAMES / NYLON WHEELS

Add \$.25 per wheel to the price of the appropriate section of steel wheel conveyor.

D. ODD LENGTH SECTIONS

Obtain per foot price based on the appropriate 10'0" section. Multiply by the required number of feet. (Fraction of a foot should be rounded off to the next highest foot.)

E. FOR GALVANIZED FRAMES – CONSULT FACTORY

F. SKATEWHEELS ONLY, 1 15/16" O.D. X 1/4" BORE

Aluminum Wheels \$.73 ea.

Galvanized Steel Wheels \$.60 ea.

Nylon Wheels \$.75 ea.

G. HOOKS (RH and LH)..... \$3.50 ea.

H. ROD COUPLER \$2.30 ea.

Gravity Skatewheel Spurs

SPUR CONVEYOR

2 1/2" x 1" x 12 Ga. Painted Frame – Steel Wheels

| Model No. | Overall Frame Width | 45 Deg. Straight Spur Lengths | | | Curve Spur | |
|------------|---------------------|-------------------------------|-------|-------|------------|--------------|
| | | 2' | 3' | 5' | Model No. | 90 Deg. Spur |
| | | | | | | |
| 12GS-45-25 | 12" | \$177 | \$215 | \$248 | 12GS90-25 | \$242 |
| 15GS-45-25 | 15" | 187 | 215 | 262 | 15GS90-25 | 254 |
| 18GS-45-25 | 18" | 211 | 244 | 297 | 18GS90-25 | 288 |
| 24GS-45-25 | 24" | 271 | 313 | 381 | 24GS90-25 | 410 |

Note: Specify RH or LH (See page 17.)