

Model "251CRR" & Model "267CRR" Chain Driven Live Roller Conveyor



- Oily conditions
- Pallets
- Drums
- Positive drive

STANDARD SPECIFICATIONS

Bed - Conveying surface width 28", 34", 40", 46", 52", 58", and 64". 2½" diameter x 11 gauge and 2⅝" x 7 gauge steel tread rollers, 1⅛" hex shafts. No. 50 chain is used on 5", 7½", 10" roller centers only. No. 60 chain is used on 6", 7½", and 12" centers only. Tread rollers mounted in 4" and 6" x 4 gauge formed steel channel frame. Sections are bolted together with butt couplings and floor supports.

Drive Chain - No. 50 roller chain or No. 60 roller chain can be used with either the 251CRR or 267CRR as above.

Floor Supports - Heavy duty supports are adjustable 30½" to 40" from floor to top of roller. One support at every bed joint and each end of conveyor.

Center Drive - Mounted underneath conveyor, center of section. Can be placed most any where in conveyor length.

Bearings - Removable, sealed, prelubricated ball bearings.

Chain Guard - Lower chain guard is mounted on bottom of roller frame, and upper chain guard is mounted above roller frame to totally enclose drive chain.

Speed Reducer - C-Face mounted heavy duty worm gear reducer.

Motor - ¾ HP 230/460-3-60 TE motor.

Speed - 30 FPM.

Capacity - Maximum load per linear foot of conveyor; 300 lbs. with supports on 10' centers, 1000 lbs. with supports on 5'0" centers.

OPTIONAL EQUIPMENT

Floor Supports - Lower or higher supports are available. Minimum elevation, 18" from floor to top of rollers.

Side Mounted Drive - Motor-reducer unit can be mounted to side of conveyor frame. Drive is higher than conveyor frame. Minimum elevation to top of rollers is 7".

Roller Set Low - 1" x 1½" x 7 gauge formed angle guard rail, bolted to top of non-driven side rail to provide ¾" high guard rail.

Motor - Single phase, energy efficient, explosion proof, etc. Other HP available.

Roller Speed - Constant and variable speeds available.

Electrical Controls - Magnetic starters and push button stations. Manual motor starters with overload protection, others.

Model "251CRR" & Model "267CRR"

MODEL "251CRR" & "267CRR" WEIGHTS

Conveyor Length	Conveying Surface	28"		34"		40"		46"		52"		58"		64"	
	Width Between Frames	31"		37"		43"		49"		55"		61"		67"	
	Overall Width	34"		40"		46"		52"		58"		64"		70"	
	Model	251	267	251	267	251	267	251	267	251	267	251	267	251	267
5'	Weight Based on 5" Roller Centers (lbs.)	392	458	430	501	463	544	496	587	529	630	562	673	595	716
10'		679	804	744	886	806	967	868	1048	930	1130	992	1212	1054	1294
15'		964	1152	1059	1272	1149	1391	1239	1510	1329	1629	1419	1748	1509	1867
20'		1498	1533	1567	1688	1814	1835	2061	2182	2308	2429	2555	2676	2755	2923
25'		1818	1846	2003	2043	2178	2238	2353	2433	2468	2628	2583	2823	2988	3018
30'		2102	2192	2317	2428	2521	2661	2725	2894	2929	3127	3133	3366	3337	3599
40'		2671	2886	2946	3199	3207	3508	3468	3817	3729	4126	3990	4435	4251	4744
50'		3240	3580	3575	3970	3893	4355	4211	4740	4529	5125	4847	5510	5165	5895
60'		3809	4274	4204	4741	4579	5202	5040	5663	5502	6124	5964	6585	6426	7046
70'		4378	4968	4833	5512	5265	6049	5697	6586	6129	7123	6561	7660	6993	8197
80'		4947	5652	5462	6283	6294	6896	7126	7509	7958	8122	7590	8735	9622	9348
90'	5516	6376	6091	7054	6673	7743	7255	8432	7837	9121	8419	9810	9001	10399	
100'	6085	7070	6720	7825	7359	8590	7998	9355	8637	10120	9276	10885	9915	11650	

FOR 6", 7 1/2", 10", 12" CENTERS DEDUCT WEIGHT LISTED BELOW - 5'0" OAL BED SECTION

Roller Centers	Width Between Frames	31"		37"		43"		49"		55"		61"		67"	
	Model	251	267	251	267	251	267	251	267	251	267	251	267	251	267
6"	Weight Deduction (lbs.)	55	74	64	85	72	98	80	111	88	124	96	137	104	150
7 1/2"		55	74	64	85	72	98	80	111	88	124	96	137	104	150
10"		82	109	96	127	109	145	122	163	135	181	148	199	161	217
12"		94	116	110	130	134	152	158	174	182	196	206	218	230	240

FOR 6", 7 1/2", 10", 12" CENTERS DEDUCT WEIGHT LISTED BELOW - 10'0" OAL BED SECTION

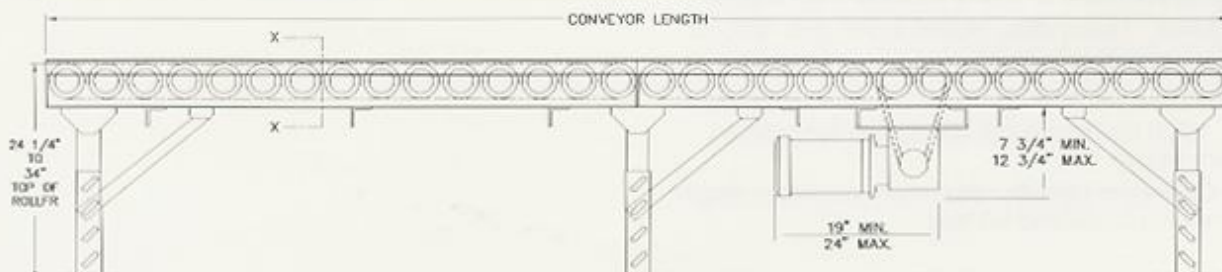
Roller Centers	Width Between Frames	31"		37"		43"		49"		55"		61"		67"	
	Model	251	267	251	267	251	267	251	267	251	267	251	267	251	267
6"	Weight Deduction (lbs.)	108	146	127	170	145	194	163	218	181	242	199	266	217	290
7 1/2"		108	146	127	170	145	194	163	218	181	242	199	266	217	290
10"		168	184	190	214	212	244	234	274	256	304	278	334	300	364
12"		189	218	220	254	251	290	282	336	313	376	344	416	375	456



SECTION "X-X"

Load Capacity Chart
30 FPM

Total Distributed Live Load		
HP	Up to 40' Long	Up to 100' Long
3/4	6000 lbs.	2800 lbs.
1	9000 lbs.	6000 lbs.
1 1/2	15000 lbs.	12000 lbs.
2	22000 lbs.	18000 lbs.



MODEL 251CRR / 267CRR

Chain Driven Live Roller

Price For Complete Conveyor Includes:

- ★ 2 1/2" Dia. x 11 Ga. Rollers "251CRR"
- ★ 2 5/8" Dia. x 7 Ga. "267CRR"
- ★ #50 or #60 Roller Chain
- ★ 4 Ga. Steel Channel Frame
- ★ HD-7 Floor Supports, 30 1/4" - 40" Adj.
- ★ 3/4 HP 230/460-3-60 TE Motor
- ★ Roller to Roller Chain Drive
- ★ 30 FPM Constant Speed
- ★ Right Angle Speed Reducer
- ★ Center Drive
- ★ Less Electrical Controls

Model 251CRR #50 Chain

Conveying Surface	28"	34"	40"	46"	52"	58"	64"
Width Between Frames	31"	37"	43"	49"	55"	61"	67"
Overall Width	34"	40"	46"	52"	58"	64"	70"
5" Centers 10' OAL	\$2750	\$2850	\$2951	\$3018	\$3152	\$3252	\$3352
Price Per Foot	163	172	181	186	198	207	216
7 1/2" Centers 10' OAL	2241	2316	2390	2440	2539	2613	2688
Price Per Foot	109	116	122	126	135	141	147
10" Centers 10' OAL	2072	2130	2187	2226	2303	2360	2418
Price Per Foot	92	97	102	105	112	117	122

Model 251CRR #60 Chain

Conveying Surface	28"	34"	40"	46"	52"	58"	64"
Width Between Frames	31"	37"	43"	49"	55"	61"	67"
Overall Width	34"	40"	46"	52"	58"	64"	70"
6" Centers 10' OAL	\$2679	\$2765	\$2850	\$2907	\$3021	\$3107	\$3193
Price Per Foot	146	154	162	167	177	185	193
7 1/2" Centers 10' OAL	2424	2498	2573	2622	2721	2796	2870
Price Per Foot	121	127	134	138	146	153	159
12" Centers 10' OAL	2121	2174	2228	2264	2336	2390	2444
Price Per Foot	92	96	100	103	109	113	118

Model 267CRR #50 Chain

Conveying Surface	28"	34"	40"	46"	52"	58"	64"
Width Between Frames	31"	37"	43"	49"	55"	61"	67"
Overall Width	34"	40"	46"	52"	58"	64"	70"
5" Centers 10' OAL	\$2853	\$2968	\$3083	\$3160	\$3316	\$3431	\$3546
Price Per Foot	173	183	194	201	215	225	236
7 1/2" Centers 10' OAL	2310	2395	2481	2538	2653	2739	2824
Price Per Foot	116	124	131	136	146	154	161
10" Centers 10' OAL	2127	2193	2258	2302	2390	2455	2520
Price Per Foot	97	103	109	112	120	126	132

Model 267CRR #60 Chain

Conveying Surface	28"	34"	40"	46"	52"	58"	64"
Width Between Frames	31"	37"	43"	49"	55"	61"	67"
Overall Width	34"	40"	46"	52"	58"	64"	70"
6" Centers 10' OAL	\$2762	\$2859	\$2956	\$3020	\$3150	\$3247	\$3344
Price Per Foot	154	163	172	178	190	199	208
7 1/2" Centers 10' OAL	2492	2577	2663	2720	2835	2921	3007
Price Per Foot	128	135	143	148	158	165	172
12" Centers 10' OAL	2153	2215	2277	2318	2401	2462	2524
Price Per Foot	95	100	105	109	115	120	125

OPTIONAL:

- Less Complete Motor Drive (For use as slave driven conveyor) Deduct\$574
- Top Side Mount Drive Add\$278
- Structural channel frame in lieu of 4 Ga. formed channel Add\$4 / Ft. Conveyor
- Replacement Rollers Add \$70 to appropriate 251SR or 267SR Roller for each chain driven roller.
- Chain Cross-Over\$452

MODEL 251CRRCT / 251CRRCT

Chain Driven Live Roller Curve

Price For Complete Conveyor Includes:

- ★ 2 1/2" Dia. x 11 Ga. Rollers "251CRRCT"
- ★ Tapered Rollers "251CRRCT"
- ★ 4 Ga. Steel Channel Frame
- ★ HD-7 Floor Supports, 30 1/4" - 40" Adj.
- ★ 3/4 HP 230/460-3-60 TE Motor
- ★ #50 Roller Chain
- ★ 30 FPM Constant Speed
- ★ Right Angle Speed Reducer
- ★ Center Drive
- ★ Less Electrical Controls

Model 251CRRCT - Straight Rollers

Conveying Surface	28"	34"	40"	46"	52"	58"	64"
Width Between Frames	31"	37"	43"	49"	55"	61"	67"
Overall Width	34"	40"	46"	52"	58"	64"	70"
90°	\$3643	\$3754	\$3866	\$3978	\$4090	\$4202	\$4314
45°	2938	2998	3058	3118	3178	3238	3298

Less Complete Motor Drive (For Use As Slave Driven Conveyor) Deduct\$556

Model 251CRRCT - Tapered Rollers*-39" Inside Radius

Conveying Surface	28"	34"	40"	46"	52"	58"	64"
Width Between Frames	31"	37"	43"	49"	55"	61"	67"
Overall Width	34"	40"	46"	52"	58"	64"	70"
90°	\$4248	\$4470	\$4693	\$4915	\$5137	\$5359	\$5581
45°	3836	4043	4248	4454	4660	4866	5072

The Model "251CRRCT" Cannot be supplied slave driven.

* Note: Because this conveyor is an approximate "true tapered" roller curve product may "under-turn" or "over-turn" as it is conveyed through the curve. If less than 4" of misalignment is required, contact factory for pricing assistance.