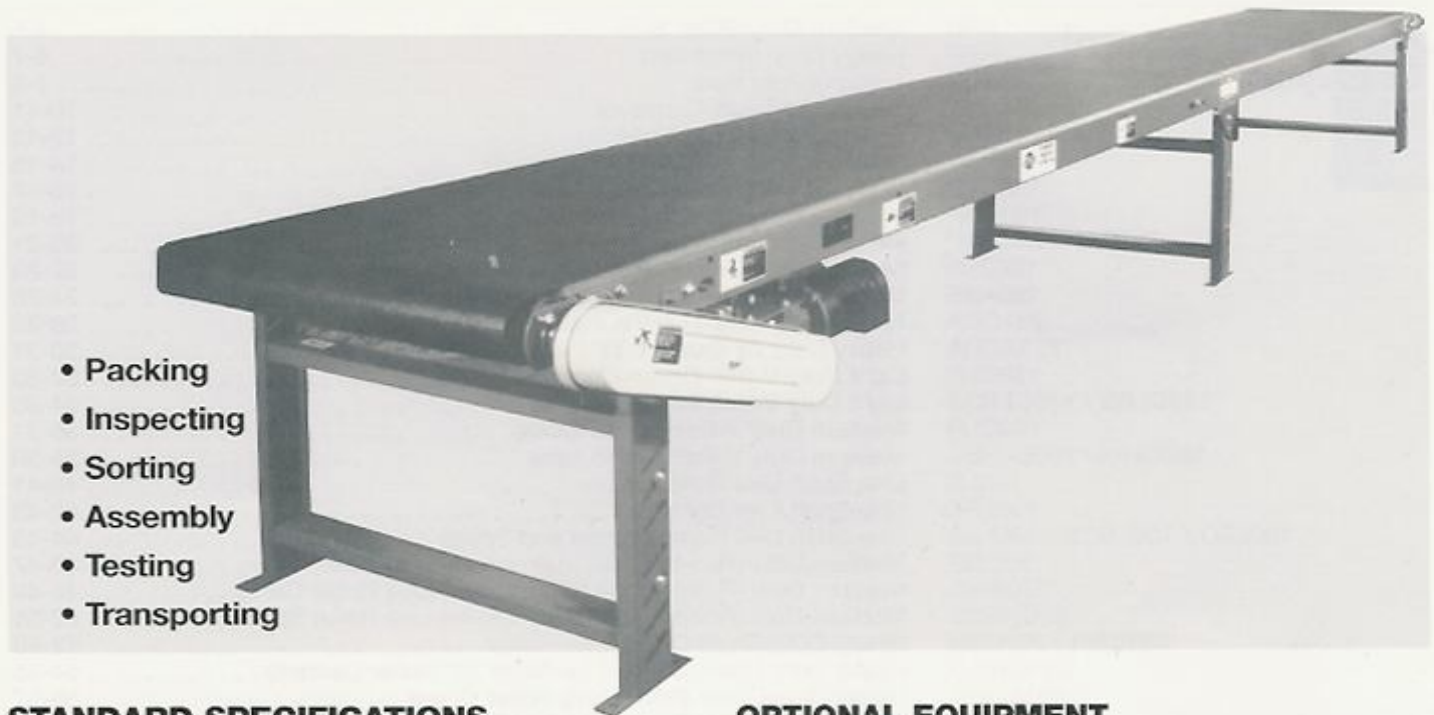


Model "LPB" Medium Duty Slider Bed Conveyor



- Packing
- Inspecting
- Sorting
- Assembly
- Testing
- Transporting

STANDARD SPECIFICATIONS

Belt - 8", 12", 18", 20", 24" and 30" Black PVC 120 belt.

Bed - 12 gauge painted formed steel, 4" deep. Bed sections are 5 feet and 10 feet long bolted together with splice plates and floor supports.

Tail Pulley - 4" diameter crowned with 1³/₁₆" diameter shaft.

Drive Pulley - 4" diameter and 8" diameter crowned and fully lagged. 4" diameter pulley with 1³/₁₆" diameter shaft, 8" diameter pulley with 1⁷/₁₆" diameter shaft.

Snub-Roller - 2" diameter for 4" diameter pulley, 2¹/₂" diameter for 8" diameter pulley.

Return Roller - 1.9" diameter adjustable on 10'0" centers.

Floor Supports - Adjustable 28¹/₂" to 42¹/₂" from floor to top of belt. One support supplied at each end of conveyor and at each bed joint.

Take-Up - 6" long screws located at tail pulley to provide belt tension.

Bearings - Sealed-prelubricated with cast iron housings.

Speed Reducer - C-Face mounted heavy duty worm gear reducer.

Motor - 1/2 HP 230/460-3-60 TE motor.

Belt Speed - 60 FPM constant.

Capacity - Maximum load per lineal foot of conveyor - 75 lbs. Not to exceed Load Capacity Chart.

OPTIONAL EQUIPMENT

Belt - Nitrile (white or black) with smooth top cover, Black PVC rough top, Brown Nitrile rough top. Special belts on application.

Side Tables - 10", 16" or 22" wide formed steel side tables provide 12", 18" or 24" work area. Tables are supported by angles bolted to bed section.

Guard Rails - Adjustable channel, continuous channel, or solid steel guard rails available.

Floor Supports - Lower or higher than standard. Castored supports with 4" diameter or 6" diameter rigid or swivel casters.

Ceiling Hangers - 1/2" diameter threaded rods 8 feet long with locking nuts and mounting hardware. Other lengths are available.

Gravity Conveyor Brackets - Adjustable bracket with 1³/₈" diameter pop-out roller for attaching wheel or roller conveyor.

Nose-Over - Adjustable single or double nose-over provides smooth transfer from incline to horizontal. See drawing on page 96 for details.

Center Drive - Mounted below conveyor bed section. Can be placed most anywhere in conveyor length.

Side Mounted Drive - End drive mounted to side of conveyor section. Specify side. Minimum 6" elevation with 4" drive pulley, minimum 9" elevation with 8" drive pulley.

Overhead Drive - End drive mounted above conveyor. Specify clearance required.

Auxiliary Take-Up - Mounted below conveyor bed section. Can be placed anywhere in conveyor length.

Motor - Single phase, energy efficient, explosion proof, etc. Other HP available.

Belt Speed - Constant and variable belt speeds available.

Electrical Controls - Magnetic starters and push button stations; Manual motor starters with overload protection, others.

Model "LPB"

Bed Length	Overall Length	Diameter Drive Pulley	Belt Width	8"	12"	18"	20"	24"	30"
			Bed Width	12"	16"	22"	24"	28"	34"
			Bed	12 Gauge Formed Steel Bed					
5'	5'10"	4"	Weight (lbs.)	252	272	315	343	366	389
10'	10'10"	4"		286	314	382	397	422	447
15'	15'10"	4"		343	380	475	494	528	562
20'	20'10"	4"		377	422	542	565	607	649
25'	25'10"	4"		434	488	635	662	713	764
30'	30'10"	4"		468	530	702	733	792	851
35'	35'10"	4"		525	596	795	830	898	966
40'	40'10"	4"		559	638	862	901	977	1053
45'	45'10"	4"		616	704	955	998	1083	1168
50'	50'10"	4"		655	753	1032	1081	1176	1271
55'	56'2"	8"	Weight (lbs.)	712	819	1125	1178	1282	1386
60'	61'2"	8"		746	861	1192	1249	1351	1453
65'	66'2"	8"		803	927	1285	1346	1457	1568
70'	71'2"	8"		839	971	1364	1420	1549	1678
75'	76'2"	8"		896	1037	1457	1517	1655	1793
80'	81'2"	8"		930	1079	1514	1588	1734	1880
85'	86'2"	8"		987	1145	1607	1685	1840	1995
90'	91'2"	8"		1021	1187	1673	1756	1920	2084
95'	96'2"	8"		1078	1253	1766	1853	2026	2199
100'	101'2"	8"		1112	1295	1833	1924	2105	2286

Minimum OAL	4" Drive	8" Drive
End Drive	3'6"	4'0"
End Side Mount	2'6"	3'0"
Center Drive	5'6"	6'6"
Auxiliary Take-up with End Drive	7'0"	7'6"
Auxiliary Take-up with Side Mount	6'0"	6'6"

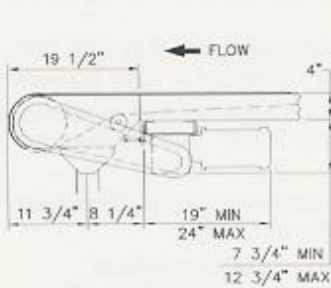
Load Capacity Chart

60 FPM	
HP	TOTAL LOAD
1/2	435 lbs.
3/4	650 lbs.
1	810 lbs.

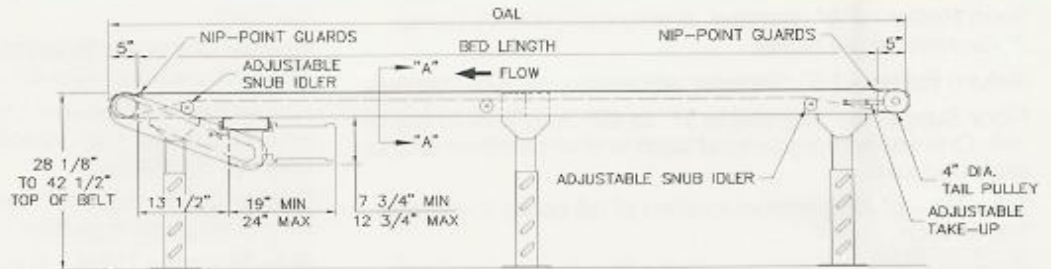
NOTE: 1 HP Max. for this model



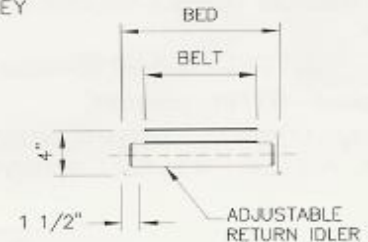
8" DIAMETER END DRIVE



8" DRIVE PULLEY



4" DRIVE PULLEY



VIEW A-A

MODEL LPB

Medium Duty Slider Bed Conveyor

Price For Complete Conveyor Includes:

- ★ Belt-120 PVC FS x FS
- ★ MD-6 Floor Supports 28 1/2"-42 1/2" Adj.
- ★ 1/2 HP 230/460-3-60 TE Motor
- ★ 60 FPM Constant Speed
- ★ Right Angle Speed Reducer
- ★ Less Electrical Controls

BED LENGTH	OVERALL LENGTH	DIA. DRIVE PULLEY	BLACK PVC BELT WIDTHS					
			8"	12"	18"	20"	24"	30"
			12Ga. Painted Bed Widths					
			12"	16"	22"	24"	28"	34"
5'	5'10"	4"	\$1435	\$1503	\$1605	\$1640	\$1709	N/A
10'	10'10"		1577	1681	1838	1890	1994	\$2151
15'	15'10"		1720	1860	2070	2141	2282	2492
20'	20'10"		1861	2038	2303	2391	2568	2832
25'	25'10"		2004	2217	2535	2642	2855	3173
30'	30'10"		2191	2395	2768	2892	3141	3514
35'	35'10"		2289	2574	3000	3143	3428	3854
40'	40'10"		2431	2751	3233	3393	3714	4195
45'	45'10"		2574	2930	3465	3644	4001	4535
50'	50'10"		2715	3108	3697	3894	4287	4876
55'	56'2"	8"	3134	3614	4295	4510	4939	5629
60'	61'2"		3276	3792	4528	4760	5225	5970
65'	66'2"		3419	3971	4760	5011	5512	6310
70'	71'2"		3561	4149	4993	5261	5798	6651
75'	76'2"		3704	4328	5225	5512	6085	6992
80'	81'2"		3845	4506	5458	5762	6371	7332
85'	86'2"		3988	4685	5690	6013	6659	7673
90'	91'2"		4130	4862	5923	6263	6944	8014
95'	96'2"		4273	5041	6155	6514	7232	8354
100'	101'2"		4415	5219	6388	6764	7518	8695
Per Foot Price Over 101'2"			29	36	47	51	58	69

*Non - Standard Length - Use price of next longer standard length.
 NOTE: Use Per Ft. price for Intermediate Bed Sections. Price includes Bed Section, Required Belt Length and (1) MD-6 Support.

MODEL HPB

Heavy Duty Slider Bed Conveyor

Price For Complete Conveyor Includes:

- ★ Belt-120 PVC FS x FS
- ★ MD-6 Floor Supports 31"-45" Adj.
- ★ 1/2 HP 230/460-3-60 TE Motor
- ★ 60 FPM Constant Speed
- ★ Right Angle Speed Reducer
- ★ Less Electrical Controls

BED LENGTH	OVERALL LENGTH	DIA. DRIVE PULLEY	BLACK PVC BELT WIDTHS					
			12"	14"	18"	24"	30"	36"
			12Ga. Painted Bed Widths					
			18"	20"	24"	30"	36"	42"
5'	7'0"	8"	\$1863	\$1896	\$2167	\$2283	N/A	N/A
10'	12'0"		2060	2111	2443	2615	\$2990	\$3158
15'	17'0"		2258	2326	2719	2947	3377	3599
20'	22'0"		2456	2541	2995	3279	3763	4041
25'	27'0"		2653	2756	3271	3610	4150	4482
30'	32'0"		2851	2972	3547	3942	4537	4923
35'	37'0"		3049	3187	3823	4274	4923	5364
40'	42'0"		3246	3402	4099	4606	5310	5806
45'	47'0"		3444	3617	4375	4938	5696	6247
50'	52'0"		3642	3832	4651	5270	6083	6688
55'	57'0"		3839	4047	4927	5602	6470	7130
60'	62'0"		4037	4262	5203	5934	6856	7571
65'	67'0"		4235	4477	5479	6266	7243	8012
70'	72'0"		4432	4692	5755	6598	7629	8454
75'	77'0"		4630	4907	6031	6930	8016	8895
80'	82'0"		4827	5122	6307	7261	8403	9336
85'	87'0"		5025	5337	6583	7593	8789	9778
90'	92'0"		5223	5552	6859	7925	9176	10219
95'	97'0"		5420	5767	7202	8257	9562	10660
100'	102'0"		5618	5982	7411	8589	9949	11101
Per Foot Price Over 102'0"			40	44	56	67	78	89

*Non - Standard Length - Use price of next longer standard length.
 NOTE: Use Per Ft. price for Intermediate Bed Sections. Price includes Bed Section, Required Belt Length and (1) MD-6 Support.