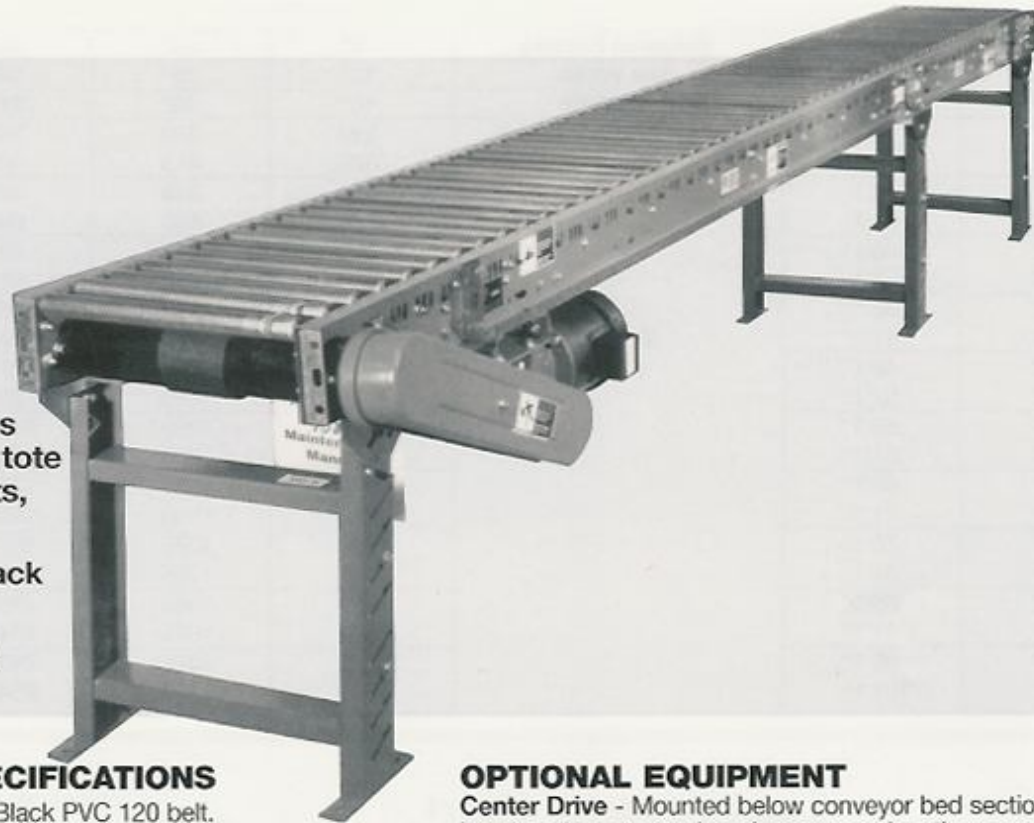


# Model "138CAP"

## Light Duty Accumulating Conveyor



- Accumulates light boxes, tote bins, baskets, etc.
- Minimum back pressure
- Economical

### STANDARD SPECIFICATIONS

**Driving Belt** - 4" wide Black PVC 120 belt.

**Bed** - Roller bed width between frames, 10", 13", 16" and 22". 5 1/2" x 1 1/2" x 12 gauge painted formed steel channel frame, bolted together with butt couplings and floor supports.

**Tread Rollers** - 1 3/8" diameter x 18 gauge galvanized tread rollers with 5/16" hex shafts on 1 1/2" and 3" centers. Safety pop-out design prevents damage to product or harm to personnel if caught between belt and tread rollers.

**Pressure Rollers** - 1 3/8" diameter x 18 gauge galvanized pressure rollers with 5/16" hex shafts on 6" centers.

**X-Bracing** - Frame Squaring device supplied on conveyors 40 feet and longer on every other bed section. X-bracing insures good product and belt tracking.

**Tail Pulley** - 4" diameter crowned with 1 3/16" shaft.

**Drive Pulley** - 4" diameter crowned and fully lagged, with 1 3/16" diameter shaft. Located at infeed end of conveyor.

**Snub Roller** - 2" diameter adjustable, located directly behind drive and tail pulley.

**Return Idler** - 1.9" diameter, adjustable, on 10'0" centers.

**Floor Supports** - 30" to 44" adjustable from floor to top of rollers. One support supplied at each end of conveyor and at each bed joint.

**Take-Up** - Located at discharge end of conveyor, provides 12" of belt take-up.

**Bearings** - Sealed, prelubricated with cast iron housings.

**Speed Reducer** - Heavy duty worm gear reducer.

**Motor** - 1/2 HP 230/460-3-60 TE motor.

**Belt Speed** - 60 FPM constant.

**Capacity** - 100 pounds per foot. Not to exceed Load Capacity Chart.

### OPTIONAL EQUIPMENT

**Center Drive** - Mounted below conveyor bed section. Can be placed most anywhere in conveyor length.

**Side Mounted Drive** - End drive mounted to side of conveyor section. Specify side. Minimum elevation - 8".

**Guard Rails** - Adjustable channel, continuous channel, or solid steel guard rails available.

**Floor Supports** - Lower or higher supports available.

**Ceiling Hangers** - 1/2" diameter threaded rods 8 feet long with locking nuts and mounting hardware. Other lengths are available.

**Motor** - Single phase, energy efficient, explosion proof, etc. Other HP available.

**Belt Speed** - Constant and variable belt speeds available.

**Electrical Controls** - Magnetic starters and push button stations; Manual motor starters with overload protection, others.

# Model "138CAP"

Bed Length	Overall Length	Belt Width		4"			
		Width Between Frames		10"	13"	16"	22"
		Overall Width		13"	16"	19"	25"
		Rollers Spaced on 3" Centers					
7'	10'	Weight (lbs.)	400	425	445	480	
12'	15'		535	555	580	610	
17'	20'		545	650	670	710	
22'	25'		750	770	790	830	
27'	30'		840	870	885	925	
32'	35'		950	970	990	1040	
37'	40'		1055	1085	1100	1150	
42'	45'		1160	1180	1205	1250	
47'	50'		1265	1290	1310	1350	
52'	55'		1370	1390	1415	1455	
57'	60'		1480	1500	1520	1550	
62'	65'		1580	1605	1625	1670	
67'	70'		1690	1710	1730	1775	
72'	75'		1800	1820	1835	1880	
77'	80'		1910	1925	1945	1990	
82'	85'		2010	2120	2130	2160	
87'	90'		2170	2180	2190	2200	
92'	95'		2210	2230	2250	2295	
97'	100'		2320	2350	2380	2400	

For Weights on other than 3" centers adjust as follows:

Roller Centers	10" BF		13" BF		16" BF		22" BF	
	5'	10'	5'	10'	5'	10'	5'	10'
1 1/2"	+30	+60	+45	+90	+45	+90	+52	+104

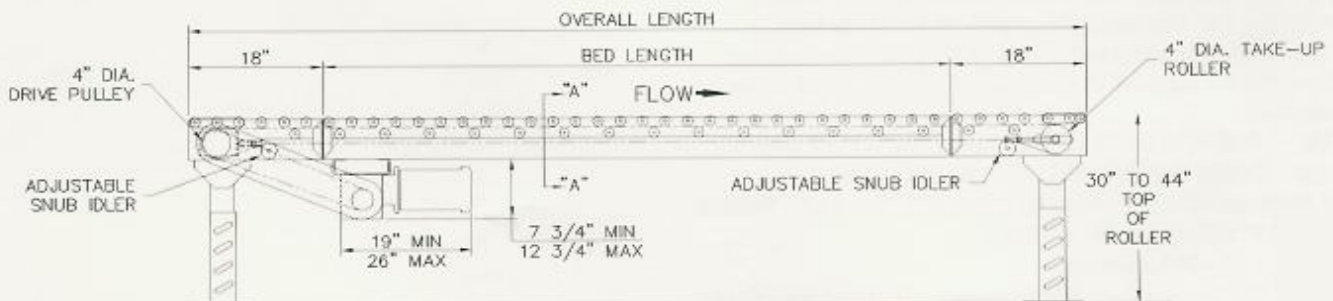
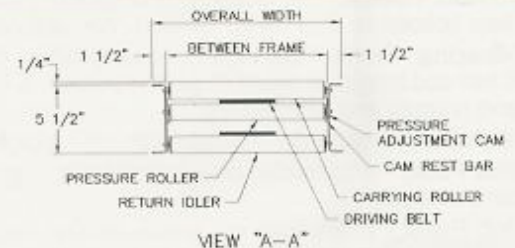
Driving force is adjustable through the use of a 9 position cam which raises and lowers each individual pressure roller. Each position of the cam is numbered so that once the desired driving force has been determined, all of the other cams can be easily set to the same driving position.

For minimum pressure accumulation, the driving force is set to convey the heaviest product. Product will then accumulate with approximately 2% back pressure depending on the footprint of the product.

## Load Capacity Chart

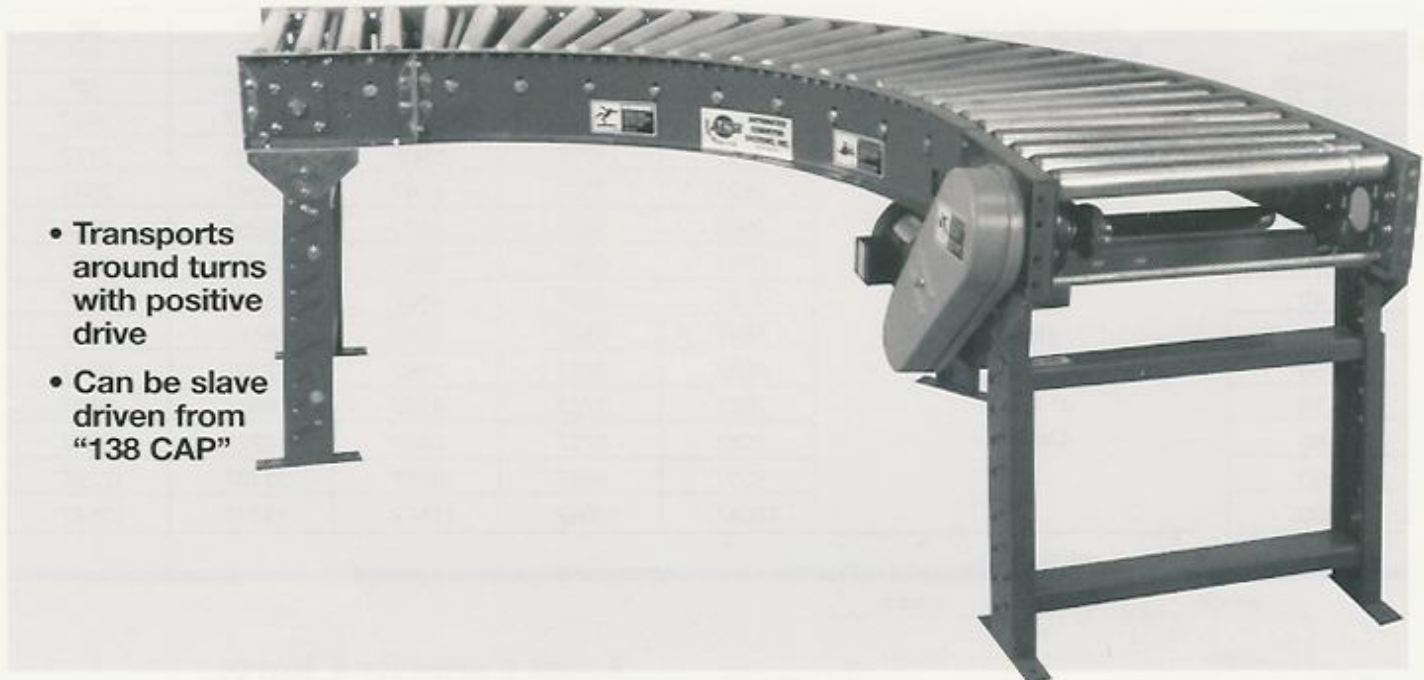
60 FPM	
HP	TOTAL LOAD
1/2	1300 lbs.
3/4	2000 lbs.

**NOTE:** 3/4 H.P. Maximum. Above 3/4 H.P. use Model "190CAP"





# Model "138 CLR" V-Belt Curve



- Transports around turns with positive drive
- Can be slave driven from "138 CAP"

## STANDARD SPECIFICATIONS

**Driving Belt** - "B" section V-belt.

**Bed** - Roller bed width between frames, 10", 13", 16" and 22". 5 1/2" x 1 1/2" x 12 gauge painted formed steel channel frame.

**Tread Rollers** - 1 3/8" diameter x 18 gauge galvanized steel tread rollers, 1 1/2" centers, 5/16" hex shaft for 13"-19" OAW. 2 1/2" to 1 11/16" tapered roller for 25" OAW conveyor, 7/16" hex shaft.

**Pressure Sheaves** - 3" diameter x 3/8" bore, adjustable to give required driving force.

**Floor Supports** - Adjustable 30" to 44" from floor to top of rollers. One support at each end, center leg on outer rail.

**Tangent** - 12" long, one on each end.

**Take-Up** - Screw take-up provided to insure proper V-belt tension. Mounted underneath conveyor.

**End Drive** - Mounted below bed section.

**Bearings** - Sealed prelubricated with cast iron housings.

**Speed Reducer** - C-Face mounted heavy duty worm gear reducer.

**Motor** - 1/2 HP 230/460-3-60 TE motor.

**Conveying Speed** - 60 FPM constant.

**Capacity** - 300 lbs. total distributed live load.

## OPTIONAL EQUIPMENT

**Guard Rails** - Adjustable channel, continuous channel, or solid steel guard rails available.

**Floor Supports** - Lower or higher supports are available. Minimum elevation 15 1/2".

**Ceiling Hangers** - 1/2" diameter threaded rods 8 feet long with locking nuts and mounting hardware. Other lengths are available.

**Side Mounted Drive** - End drive mounted to side of conveyor bed section. Minimum elevation 8". Specify side.

**Motor** - Single phase, energy efficient, explosion proof, etc. Other HP available.

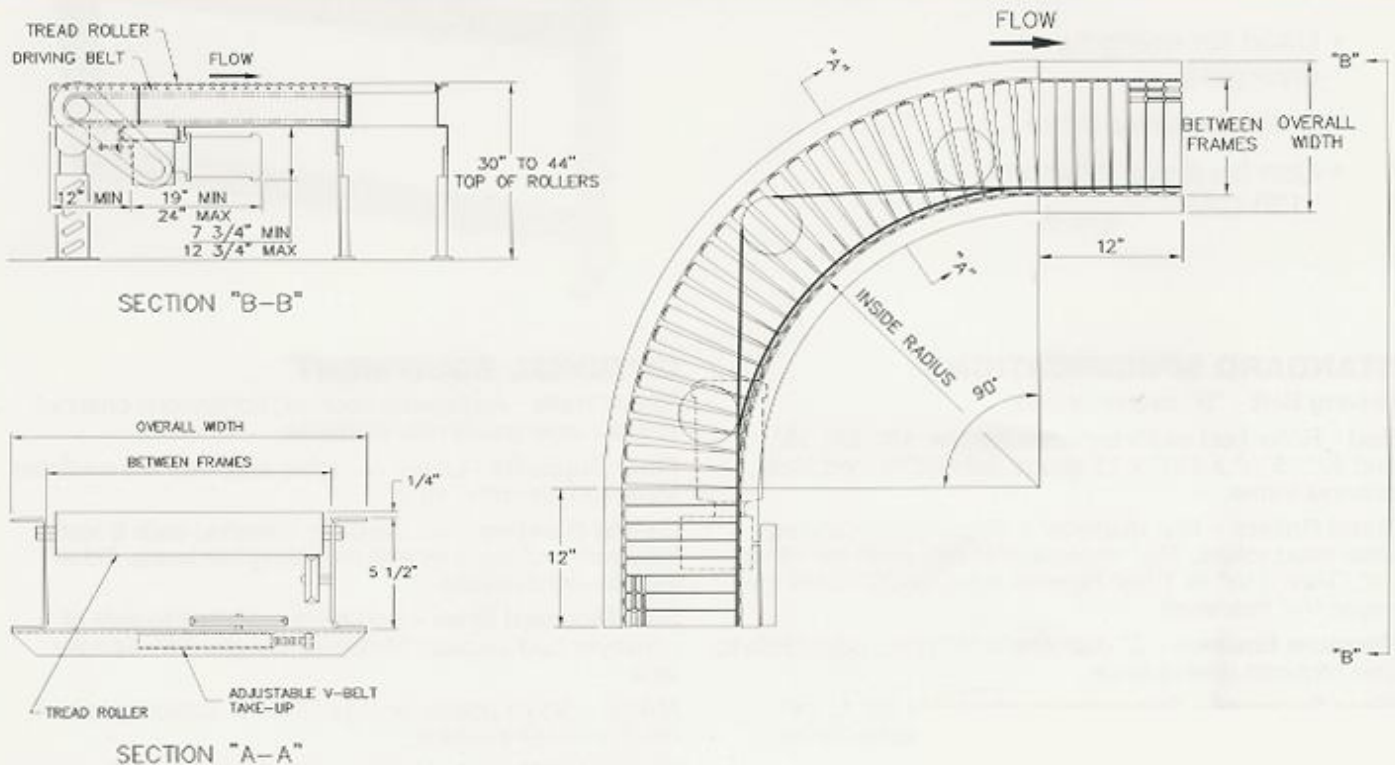
**Conveying Speed** - Variable and other constant speeds available.

**Electrical Controls** - Magnetic starters and push button stations; Manual motor starters with overload protection, others.

# Model "138 CLR"

Overall Width	Width Between Frames	R	Number Of Rollers			Weight (Lbs.)		
			90°	45°	30°	90°	45°	30°
13"	10"	25"	42	29	24	280	265	245
16"	13"					295	275	255
19"	16"					315	285	265
25"	22"	32 1/2"	36	26	23	435	415	395

Note: 22" between rail curves are furnished with 2 1/2" to 1 1/8" diameter tapered rollers. 10", 13" and 16" between rail curves are furnished with 1 3/8" diameter straight rollers.





# MODEL 138CAP

## Light Duty Live Roller Accumulating

### Price For Complete Conveyor Includes:

- ★ 1 3/8" Dia. x 18 Ga. Rollers on 3" Centers, 5/16" Hex Shaft
- ★ 4" Wide 120 PVC Belt
- ★ 5 1/2" Deep x 12 Ga. Painted Frame
- ★ 4" Dia. Lagged Drive Pulley
- ★ MD-6 Floor Supports, 30"-44" Adj.
- ★ End Drive
- ★ 60 FPM Constant Speed
- ★ 1/2 HP 230/460-3-60 TE Motor (Max. HP 3/4)
- ★ Right Angle Speed Reducer
- ★ Less Electrical Controls

### OPTIONAL:

\*For optional 1 1/2" roller centers in place of 3" centers add the per foot price times the length of the conveyor in feet to the 3" center price shown in chart.

OVERALL LENGTH	Width Between Frames	10"	13"	16"	22"
	Overall Frame Width	13"	16"	19"	25"
5'	Prices For 3" Roller Centers	\$1313	\$1341	\$1368	\$1423
10'		1626	1665	1704	1781
15'		1940	1989	2039	2139
20'		2253	2314	2375	2497
25'		2566	2638	2710	2855
30'		2880	2963	3046	3213
35'		3193	3287	3382	3571
40'		3506	3612	3717	3929
45'		3819	3936	4053	4287
50'		4133	4261	4389	4645
55'		4446	4585	4724	5003
60'		4759	4910	5060	5361
65'		5072	5234	5396	5719
70'		5386	5558	5731	6077
75'		5699	5883	6067	6435
80'		6012	6207	6402	6793
85'		6325	6532	6738	7151
90'		6639	6856	7074	7509
95'		6952	7181	7409	7867
100'		7265	7505	7745	8225
Per foot Price 3" centers		63	65	68	72
Per foot add'l for 1 1/2" centers *		21	24	26	31

\* Non-Standard Lengths - Use price of longer standard length.

# MODEL 138CLR / 138CLRS

## Live Roller Curve Live Roller Spur Curve

### Price For Complete Conveyor Includes:

- ★ 1 3/8" Dia. x 18 Ga. Galvanized Straight Rollers
- ★ 5/16" Hex Shaft
- ★ V-Belt Driven Rollers
- ★ 1'-0" Lg. Tangent On Each End
- ★ 5 1/2" Deep x 12 Ga. Painted Frame
- ★ MD-6 Floor Supports, 30"-44" Adj.
- ★ Right Angle Reducer
- ★ 60 FPM Constant Speed
- ★ 1/2 HP 230/460-3-60 TE Motor
- ★ Less Electrical Controls

### Model 138CLR

Overall Width	Width Between Frames	90°	45°	30°
13"	10"	\$1660	\$1528	\$1474
16"	13"	1713	1571	1508
19"	16"	1767	1613	1543
25**	22"	1874	1697	1613

Note: to slave drive from "138CAP"

a) Deduct drive price - \$422

b) Add Center drive to "138CAP" - \$472

\*Supplied with 2 1/2" - 1 11/16" Tapered Rollers, 7/16" hex shaft.

### Model 138CLRS (Specify right or left hand — see page 17)

Overall Width	Width Between Frames	45°	30°
13"	10"	\$1819	\$1961
16"	13"	1879	1996
19"	16"	1938	2035
25**	22"	2058	2110

Note: to slave drive from "138CAP"

a) Deduct drive price - \$422

b) Add Center drive to "138CAP" - \$472

**NOTE: For Special Length Tangents see Power Accessories Page 20, Item #14**

# MODEL 138CLRSS

## Live Roller Straight Spur

### Price For Complete Conveyor Includes:

- ★ 1 3/8" Dia. x 18 Ga. Galvanized Rollers
- ★ 5 1/2" Deep x 12 Ga. Painted Frame
- ★ MD-6 Floor Supports, 30"-44" Adj.
- ★ Right Angle Reducer
- ★ 60 FPM Constant Speed
- ★ Totally Enclosed Guard
- ★ V-Belt Driven Rollers
- ★ 1/2 HP 230/460-3-60 TE Motor
- ★ Less Electrical Controls

(Specify right or left hand — see page 17)

Overall Width	Width Between Frames	45°	30°
13"	10"	\$1533	\$1557
16"	13"	1557	1580
19"	16"	1580	1604
25**	22"	1628	1651

Note: to slave drive from "138CAP"

a) Deduct drive price - \$422

b) Add Center drive to "138CAP" - \$472